

CERTIFICATE OF ANALYSIS

Product Information

Product Name	CHO-K1/CRF1/Gα15
Cat. No.	M00343
Lot No.	B80131710
Host Cell:	CHO-K1
Target Gene:	CRF1
Quantity:	2 vials of frozen cells, > 1x10 ⁶ cells/vial
Shipping Condition:	Dry Ice
Recommended Storage Condition:	Liquid Nitrogen

Stable Cell Line Information

Recommended Cell Culture Medium: F12 + 10% FBS + 400 µg/ml G418 + 100 µg/ml Hygromycin B

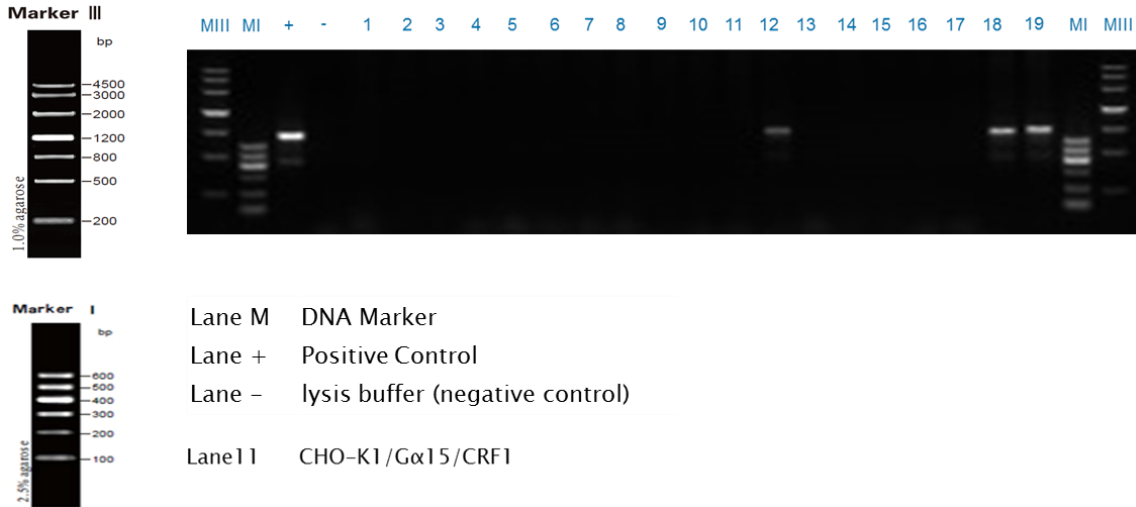
Freeze Medium: 45% Culture Medium, 45%FBS, 10% (V/V) DMSO

Application: Functional assay for CRF1

Test Item	Specification	Result
Mycoplasma 160	Negative.	Negative., Appendix 1
Functional assay	Calcium flux	EC ₅₀ =3.55 nM

Appendix

Appendix 1: Mycoplasma 160



Appendix 2 : Calcium assay

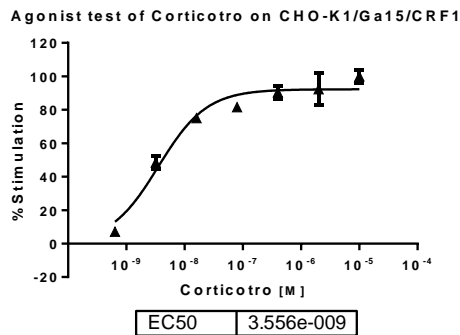


Figure 1. Corticotro-induced concentration-dependent stimulation of intracellular calcium mobilization in CHO-K1/CRF1/Gα15 cells. The cells were loaded with Calcium-4 prior to stimulation with a CRF1 receptor agonist, Corticotro. The intracellular calcium change was measured by FLIPR. The relative fluorescent units (RFU) were plotted against the log of the cumulative doses (5-fold dilution) of Corticotro (Mean ± SD, n = 3). The EC50 of Corticotro on CRF1 co-expressing with Gα15 in CHO-K1 cells was 3.5 nM. The S/B of Corticotro on CRF1 co-expressing with Gα15 in CHO-K1 cells was 52.

Caution

For research use only. Not intended for household use. If you have any questions about the Certificate of Analysis, please contact our customer service representative at 1-877-436-7274 (Toll-Free), or 1-732-885-9188.

Certified by: *Leon Soy* Date: 10/20/2017
Department of Biologics Development Director